

MEMORY DE SÍLABAS TRABADAS

BR-TR-CR-DR-PR-GR-FR



cabra



sombrero



abrigo



libro



brújula



trampa



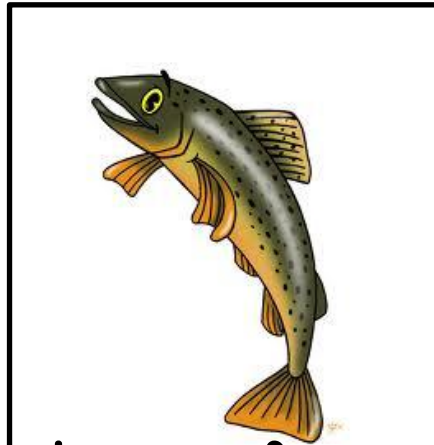
trébol



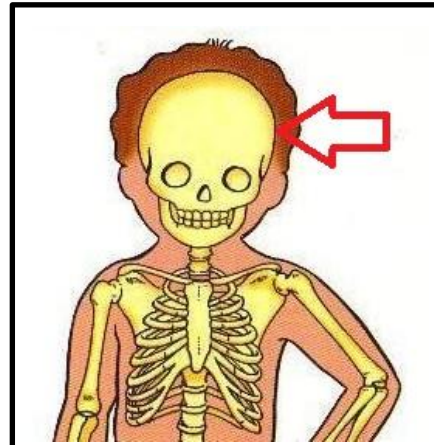
trineo



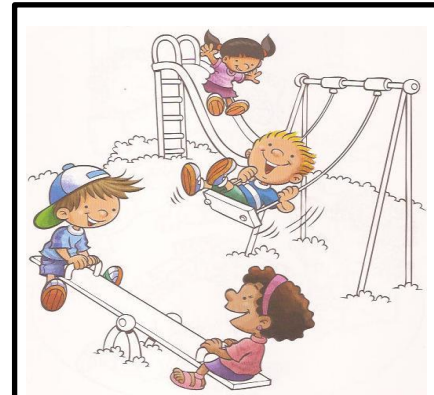
teatro



trucha



cráneos



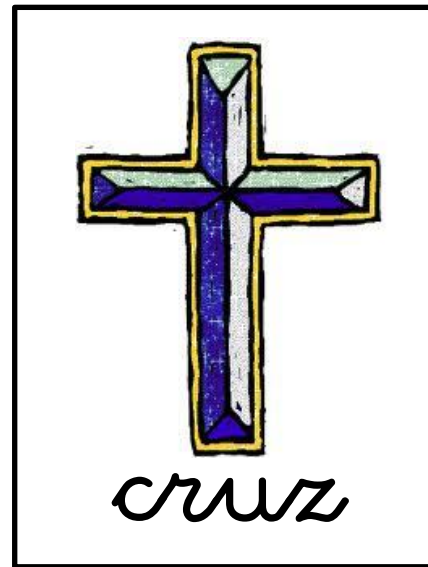
recreo



cristal



cromos



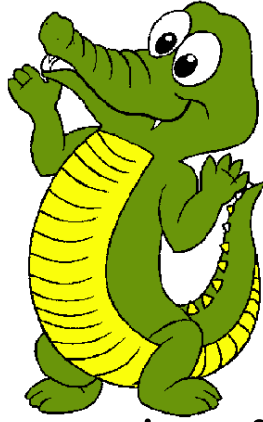
cruz



dragón



edredón



cocodrilo



cuadro



druida



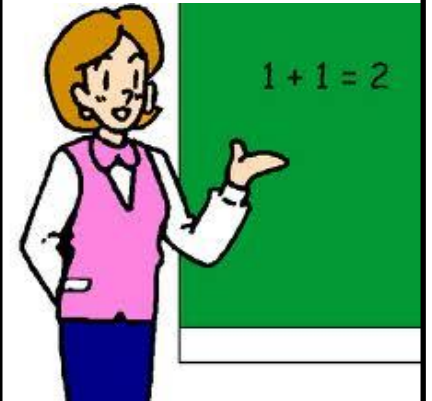
pradera



pregunta



princesa



profesora



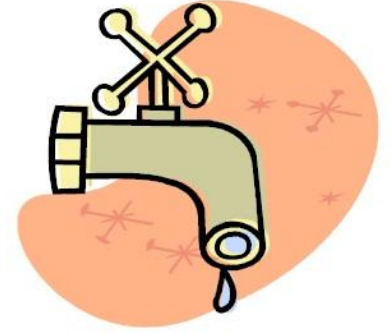
prueba



granja



cangrejo



grifo



ogro



grúa



frasco



cofre



resfriado



frondoso



fruta

